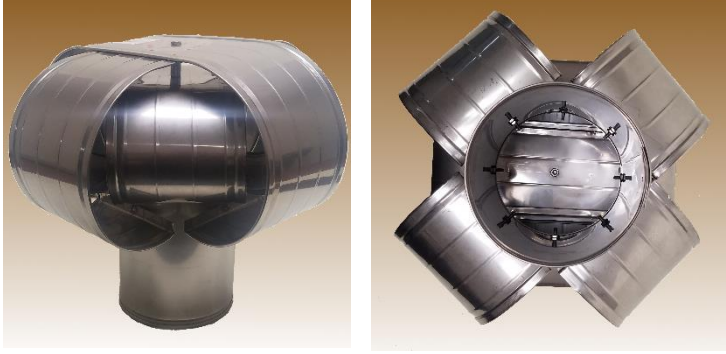


ASK AN EXPERT! CALL 508-695-7000



VSS[®] VACU-STACK[®] CHIMNEY CAPS

This is the premier chimney cap for solving common, wind-related draft problems. Wind problems often occur for homes that have hills, mountains, tall trees or taller buildings in the vicinity.

This cap also functions as a conventional chimney cap by protecting the chimney from rain, snow, debris, and animals. It is made of Austenitic Stainless Steel T304 and is designed to fit round chimney liner and Class A solid pack chimneys.

This Model works with the following types of chimneys: Single Wall Chimney Liner, Solid Pack Class A Chimney, B Vent, and Round Terra Cotta Flues

Popular Model Sizes

13"

	Flue pipe I.D.
VSS-03	3" dia.
VSS-04	4" dia.
VSS-05	5" dia.
VSS-05.5	5.5" dia.

16"

	Flue pipe I.D.
VSS-06	6" dia.
VSS-07	7" dia.
VSS-08	8" dia.
VSS-09	9" dia.
VSS-10	10" dia.

19"

	Flue pipe I.D.
VSS-10.5	10.5" dia.
VSS-11	11" dia.
VSS-11.5	11.5" dia.
VSS-12	12" dia.
VSS-13	13" dia.
VSS-14	14" dia.

LIFETIME WARRANTY

OTHER SIZES AVAILABLE

**IMPROVED
CONSUMER
PRODUCTS INC.**

CHIMNEYPAPS.COM

ORDERS@CHIMNEYPAPS.COM

508-695-7000

iep