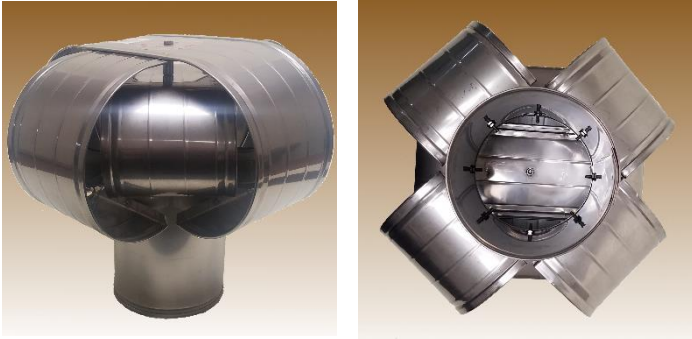


ASK AN EXPERT! CALL 508-695-7000



# VSM<sup>®</sup> VACU-STACK<sup>®</sup> CHIMNEY CAPS

This is the premier chimney cap for solving common, wind-related draft problems. Wind problems often occur for homes that have hills, mountains, tall trees or taller buildings in the vicinity.

This cap also functions as a conventional chimney cap by protecting the chimney from rain, snow, debris, and animals. Designed specifically for oceanic environments, designed to protect against rust and erosion that other caps crumble to. Made of 316 stainless steel. Made to fit round chimney liner and Class A solid pack chimneys.

This Model works with the following types of chimneys: Single Wall Chimney Liner, Solid Pack Class A Chimney, B Vent, and Round Terra Cotta Flues

## Popular Model Sizes

### 13"

	Flue pipe I.D.
VSM-03	3" dia.
VSM-04	4" dia.
VSM-05	5" dia.
VSM-05.5	5.5" dia.

### 16"

	Flue pipe I.D.
VSM-06	6" dia.
VSM-07	7" dia.
VSM-08	8" dia.
VSM-09	9" dia.
VSM-10	10" dia.

### 19"

	Flue pipe I.D.
VSM-10.5	10.5" dia.
VSM-11	11" dia.
VSM-11.5	11.5" dia.
VSM-12	12" dia.
VSM-13	13" dia.
VSM-14	14" dia.

**LIFETIME WARRANTY**

**OTHER SIZES AVAILABLE**

**IMPROVED  
CONSUMER  
PRODUCTS INC.**

**CHIMNEYCAPS.COM**

ORDERS@CHIMNEYCAPS.COM

508-695-7000

**iecp**