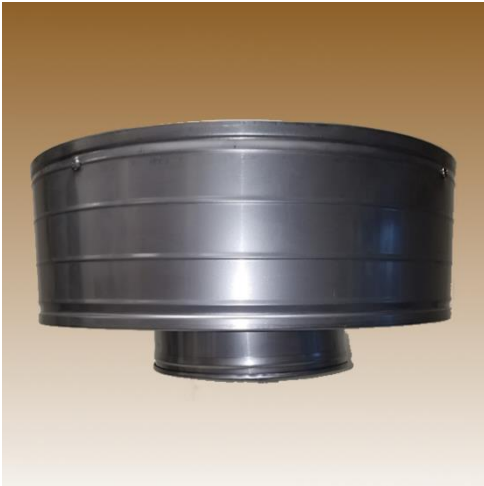


**ASK AN EXPERT! CALL 508-695-7000**



# STM STORMSHIELD CHIMNEY CAPS<sup>®</sup>

This is the premier chimney cap for solving entry of wind driven rain into a chimney system. It also works well on solving common, wind-related draft problems. Wind problems often occur for homes that have hills, mountains, tall trees or taller buildings in the vicinity.

This cap also functions as a conventional chimney cap by protecting the chimney from rain, snow, debris, and animals.

It is made of Austenitic Stainless Steel T316 and is designed to fit Class A solid pack chimneys and liners, in coastal areas. They are equipped with a 1" x 1" stainless steel screen mesh or 1/2" x 1/2" SS screen option (S5). T304 stainless models are available for non-coastal areas. See STS product model pages for more information.



## Popular Model Sizes:

### 13" Lids

	Flue pipe I.D.
STM-04	4" dia.
STM-05	5" dia.
STM-05.5	5.5" dia.

### 16" Lids

STM-06	6" dia.
STM-07	7" dia.
STM-08	8" dia.
STM-09	9" dia.
STM-9.5	9.5" dia.
STM-10	10" dia.

### 19" Lids

STM-11	11" dia.
STM-11.5	11.5" dia.
STM-12	12" dia.
STM-13	13" dia.
STM-14	14" dia.

---

**LIFETIME WARRANTY**

---

**OTHER SIZES AVAILABLE**

---

**IMPROVED  
CONSUMER  
PRODUCTS INC.**

**CHIMNEYCAPS.COM**

ORDERS@CHIMNEYCAPS.COM

508-695-7000